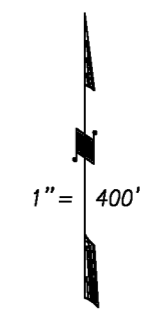


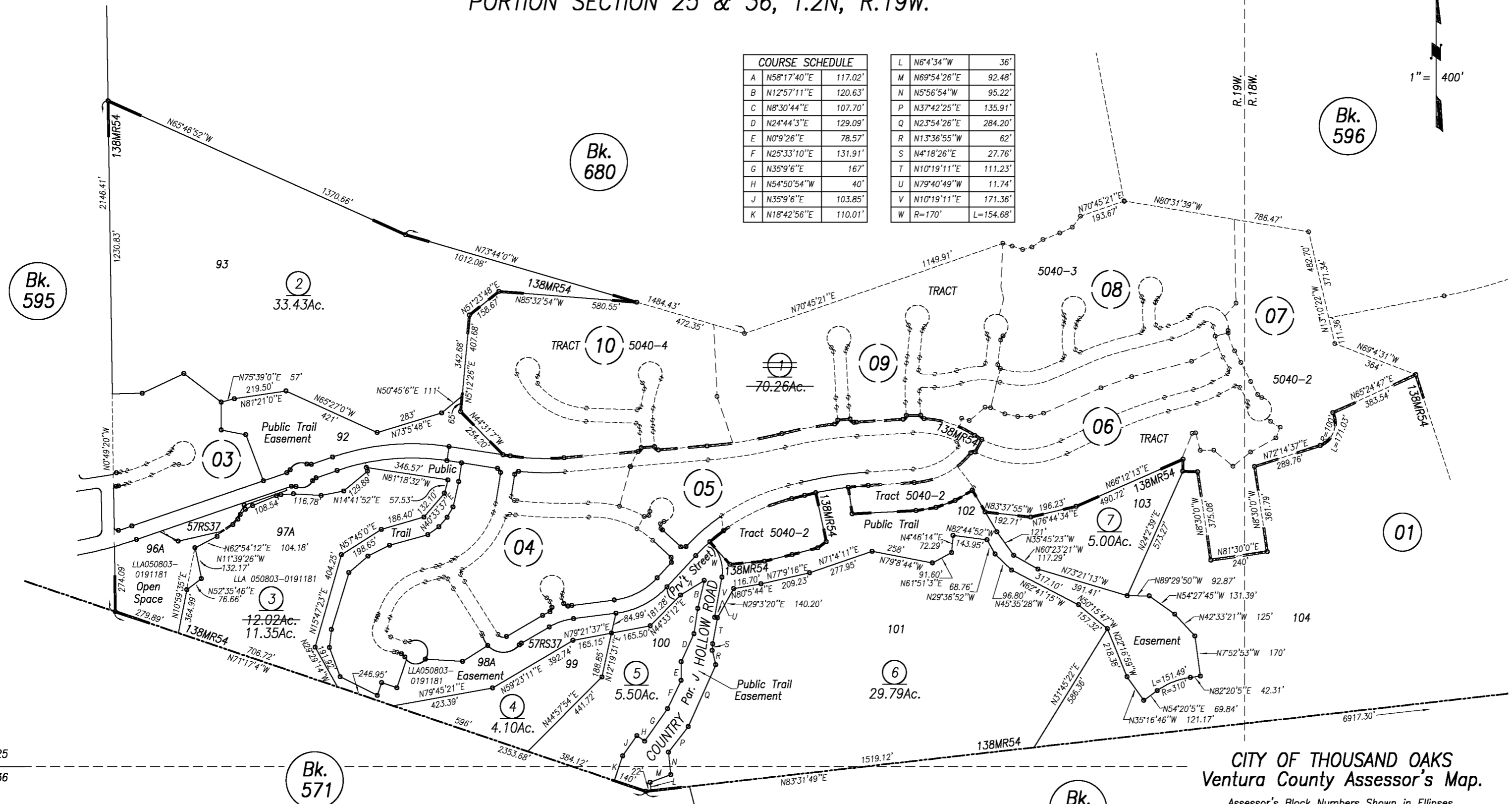
RANCHO SIMI  
 PORTION SECTION 30, T.2N, R.18W.  
 PORTION SECTION 25 & 36, T.2N, R.19W.

Tax Rate Area  
 08501

597-02



COURSE SCHEDULE		
A	N58°17'40"E	117.02'
B	N12°57'11"E	120.63'
C	N8°30'44"E	107.70'
D	N24°44'3"E	129.09'
E	N0°9'26"E	78.57'
F	N25°33'10"E	131.91'
G	N35°9'6"E	167'
H	N54°50'54"W	40'
J	N35°9'6"E	103.85'
K	N18°42'56"E	110.01'
L	N6°4'34"W	36'
M	N69°54'26"E	92.48'
N	N5°56'54"W	95.22'
P	N37°42'25"E	135.91'
Q	N23°54'26"E	284.20'
R	N13°36'55"W	62'
S	N4°18'26"E	27.76'
T	N10°19'11"E	111.23'
U	N79°40'49"W	11.74'
V	N10°19'11"E	171.36'
W	R=170'	L=154.68'



Portion Tract 5040-1, M.R. Bk.138, Pg.54  
 Portion Tract E, Rancho Simi, Bk.3, Pg.7

NOTE: ASSESSOR PARCELS SHOWN ON THIS PAGE  
 DO NOT NECESSARILY CONSTITUTE LEGAL LOTS.  
 CHECK WITH COUNTY SURVEYOR'S OFFICE OR  
 PLANNING DIVISION TO VERIFY.

CITY OF THOUSAND OAKS  
 Ventura County Assessor's Map.

Assessor's Block Numbers Shown in Ellipses.  
 Assessor's Parcel Numbers Shown in Circles.  
 Assessor's Mineral Numbers Shown in Squares.

DRAWN	SA	REVISED	2-26-2007
REDRAWN		CREATED	9-1-1999
INKED	PLOTTED	EFFECTIVE	00-01 ROLL
PREVIOUS Bk.680, Portion Pg.02			
Compiled By Ventura County Assessor's Office			

DATE	REFERENCE DOC.	EXPLANATION	REVISION LOG	
			VOID A.P.N.(s)	NEW A.P.N.(s)
B/22/2005	050803-0191181	Description H.O. ASSOC. & CITY; ADJ LINES/ACREAGE	NO APN CHANGE	
Roll-Year	06-07	Bk. 597, Pg. 02		